

# *Articolazione Organizzativa Trenitalia*

13 maggio 2011

## **CONSIGLIO DI AMMINISTRAZIONE**

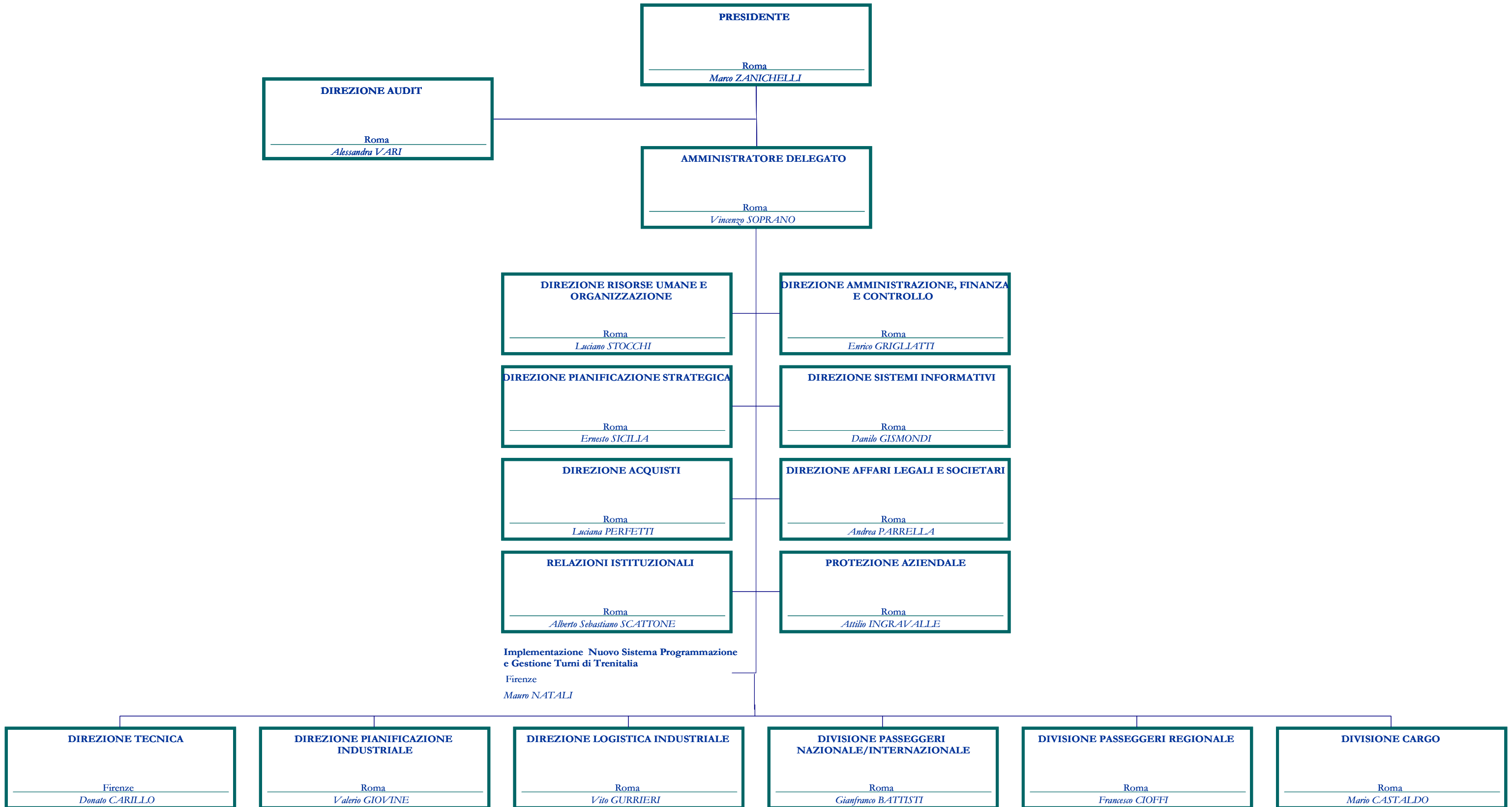
**Presidente: dr. Marco ZANICHELLI**

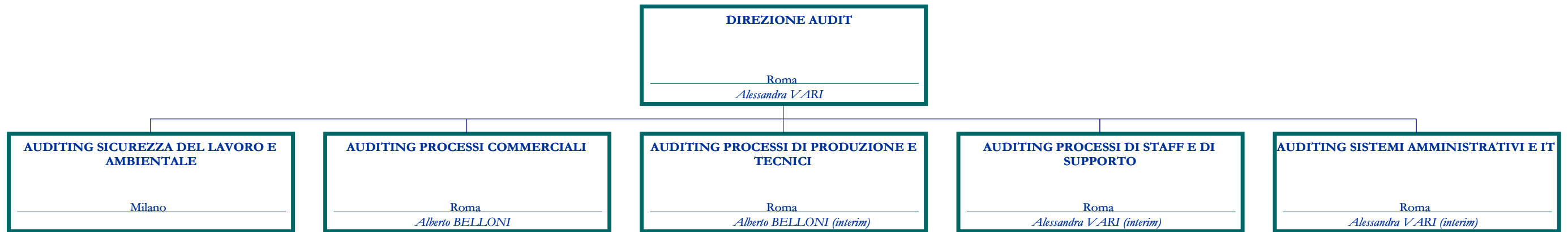
**Amministratore Delegato: ing. Vincenzo SOPRANO**

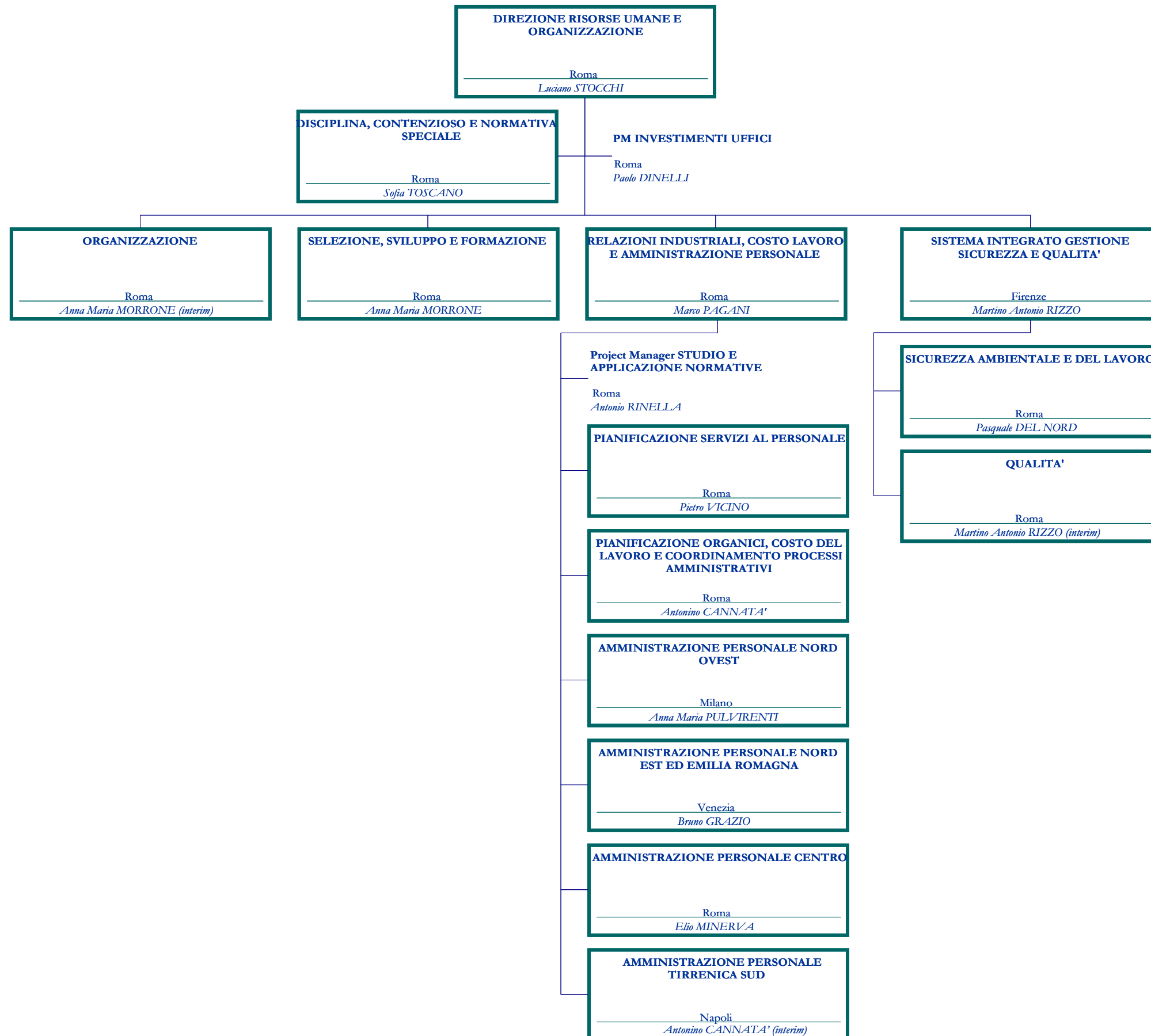
**Consigliere: dr. Domenico BRACCIALARGHE**

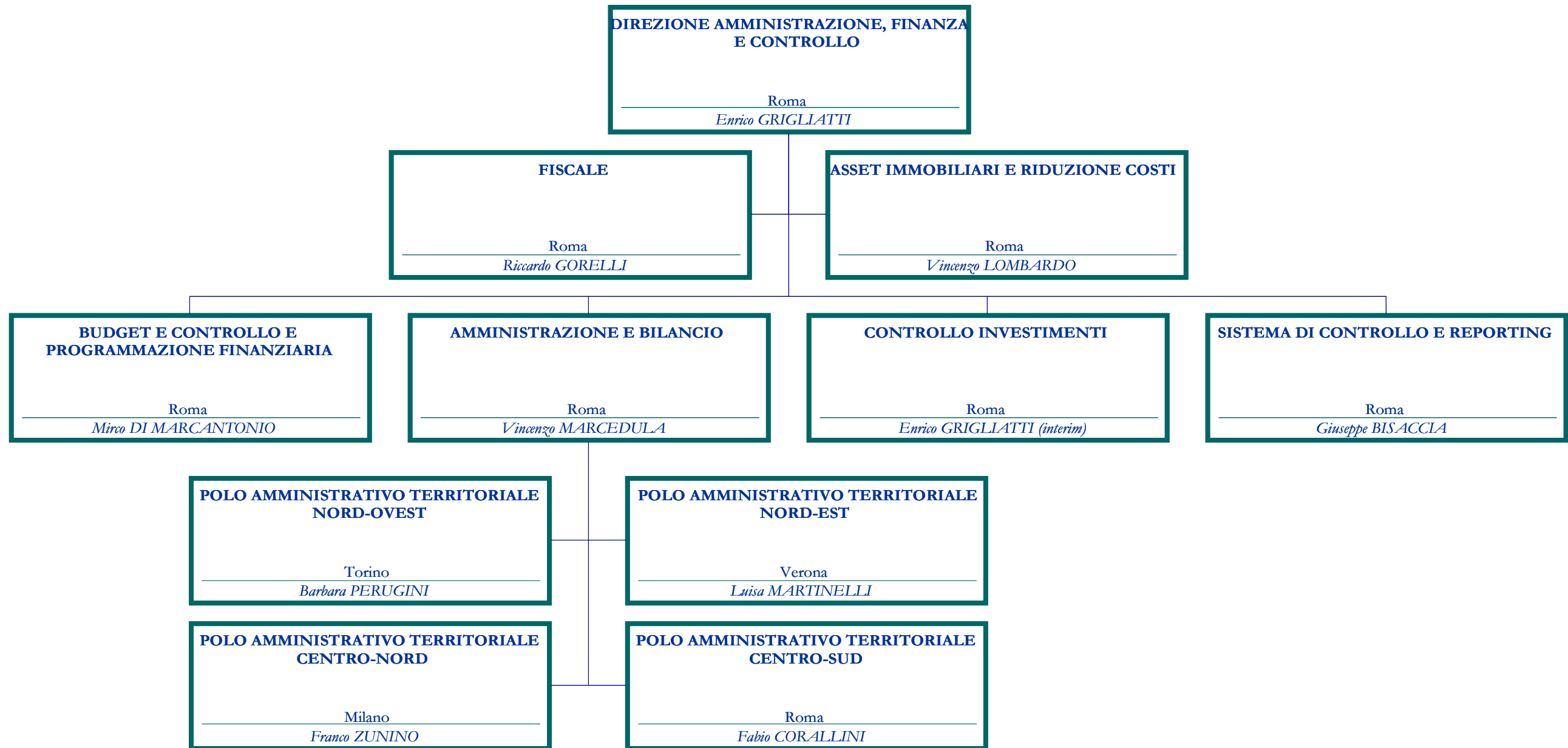
**Consigliere: dr. Francesco ROSSI**

**Consigliere: prof. Enrico MOSCATI**

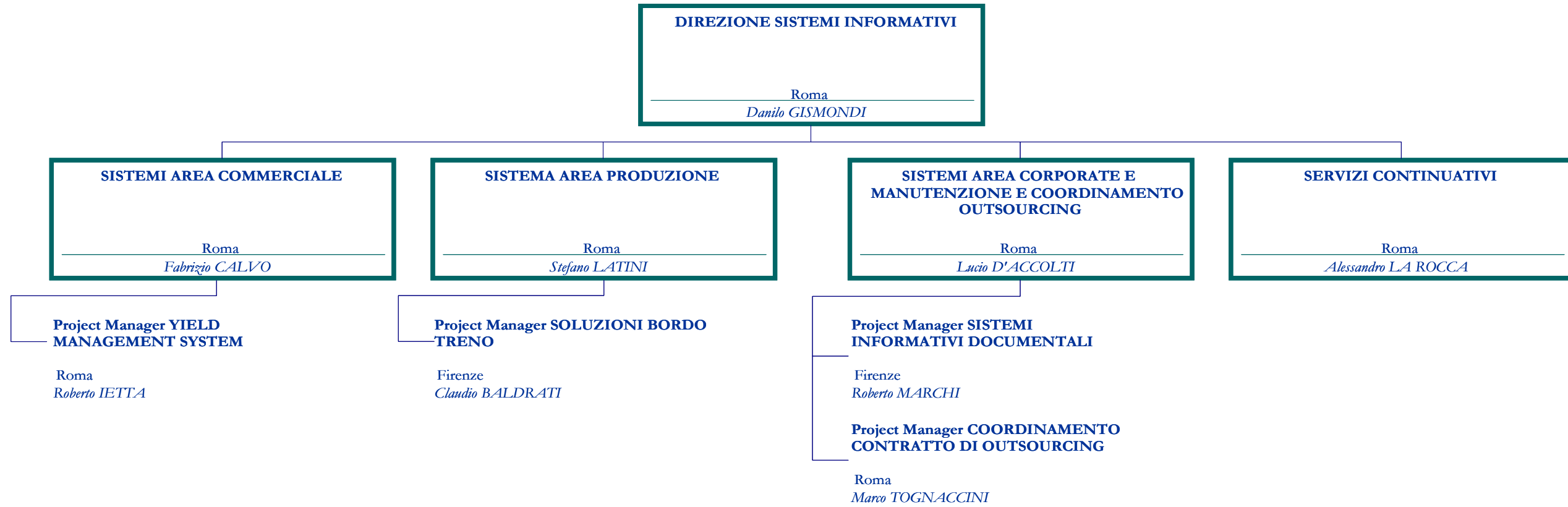


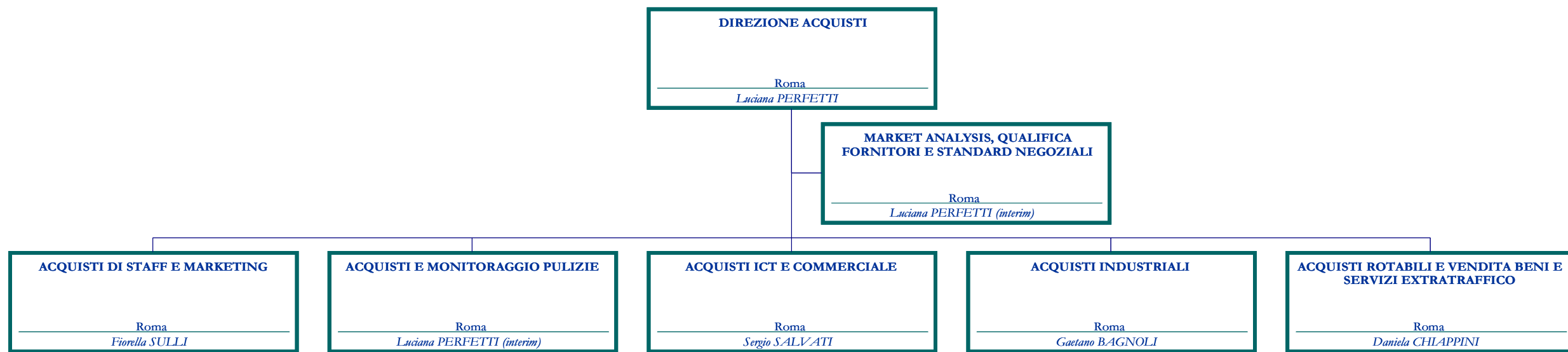




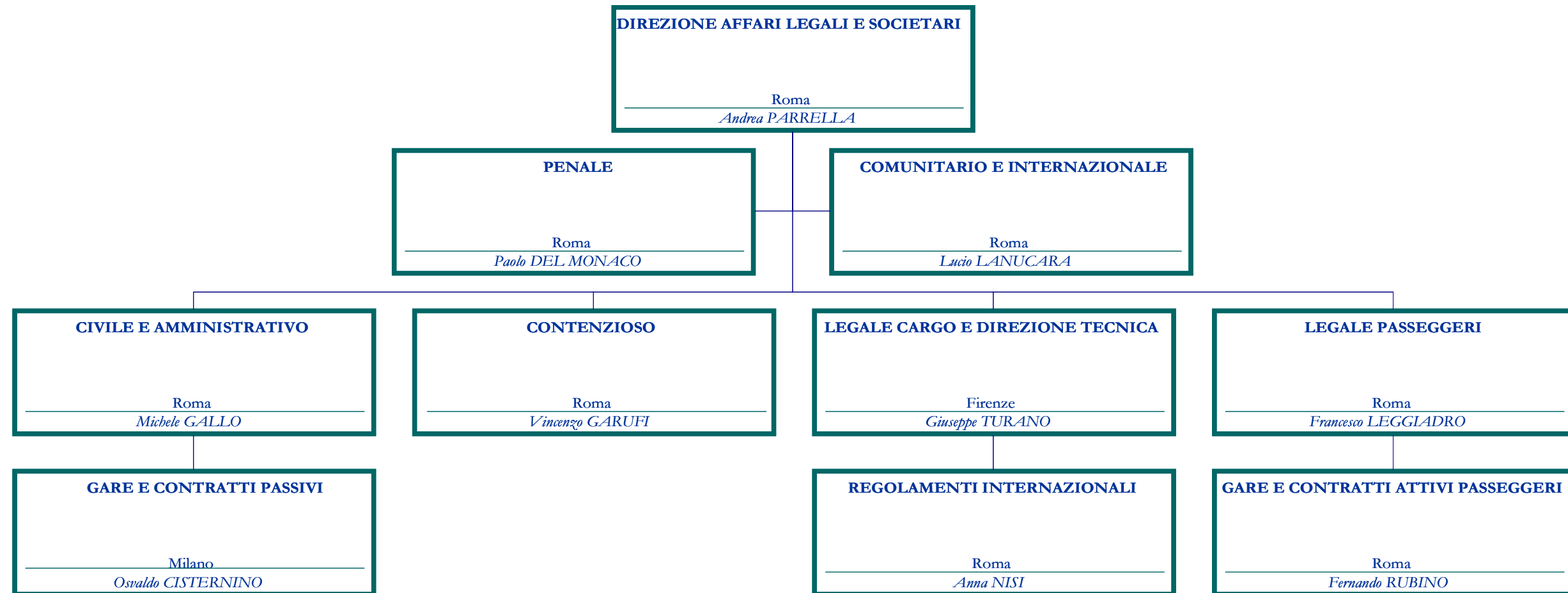




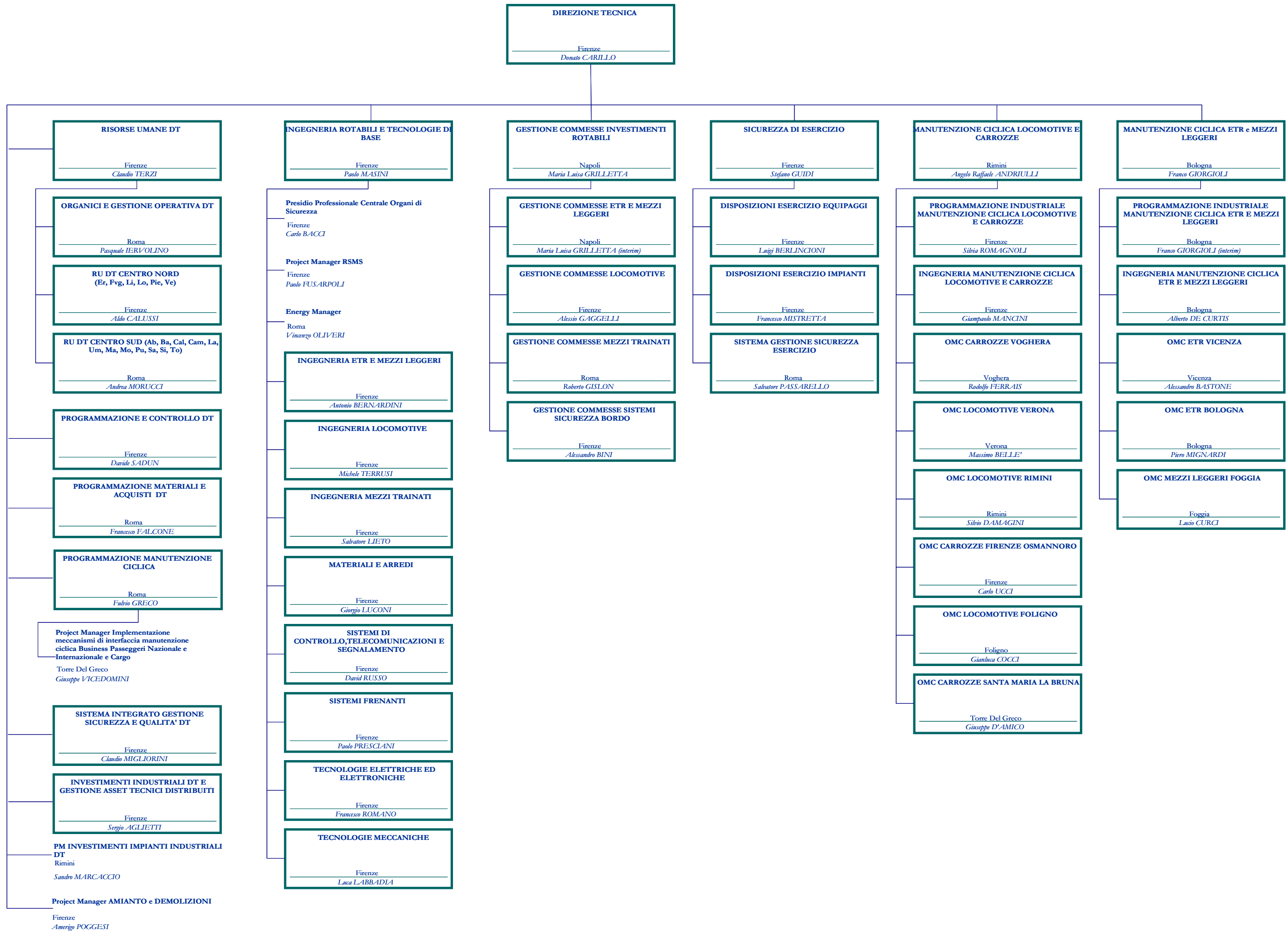


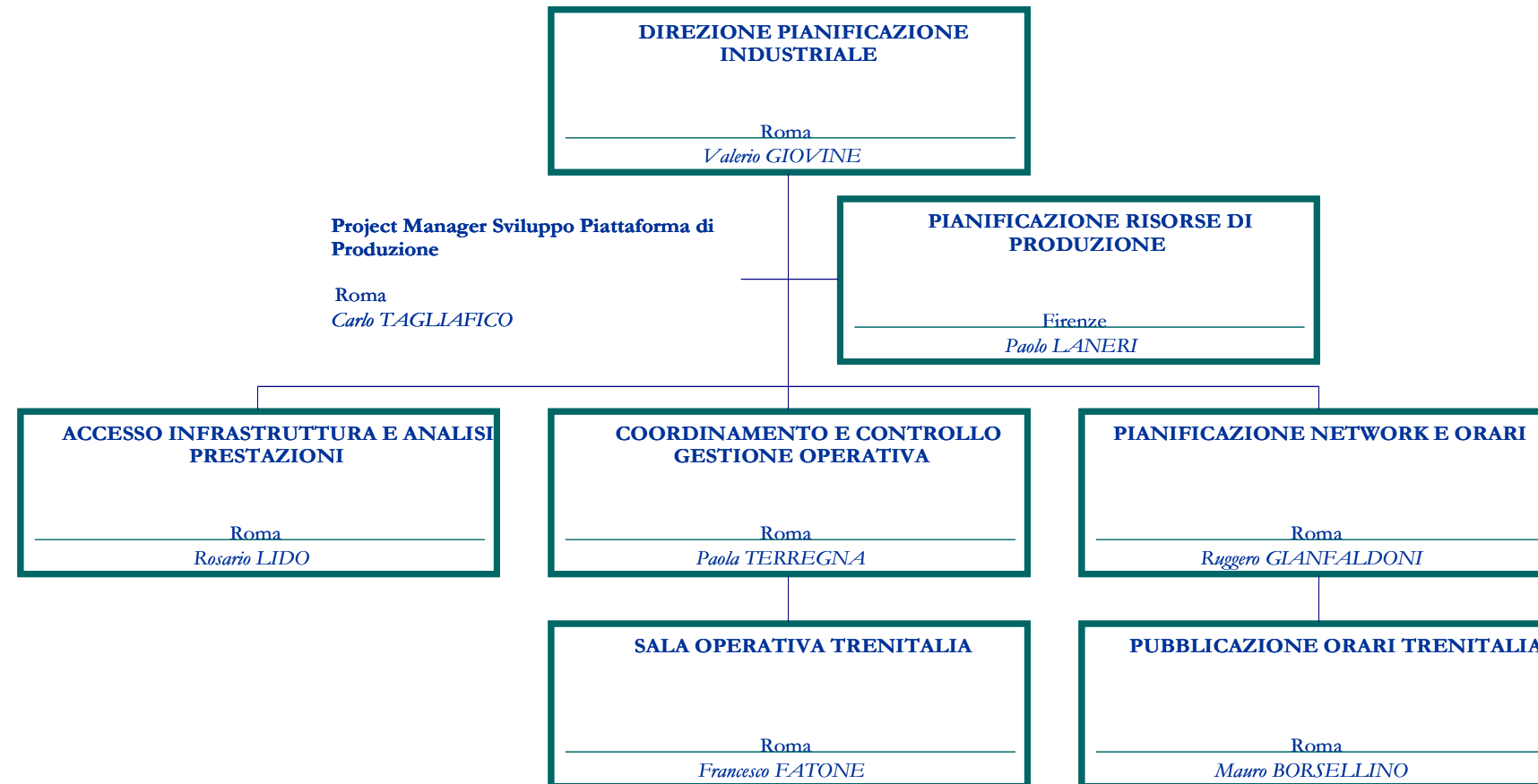


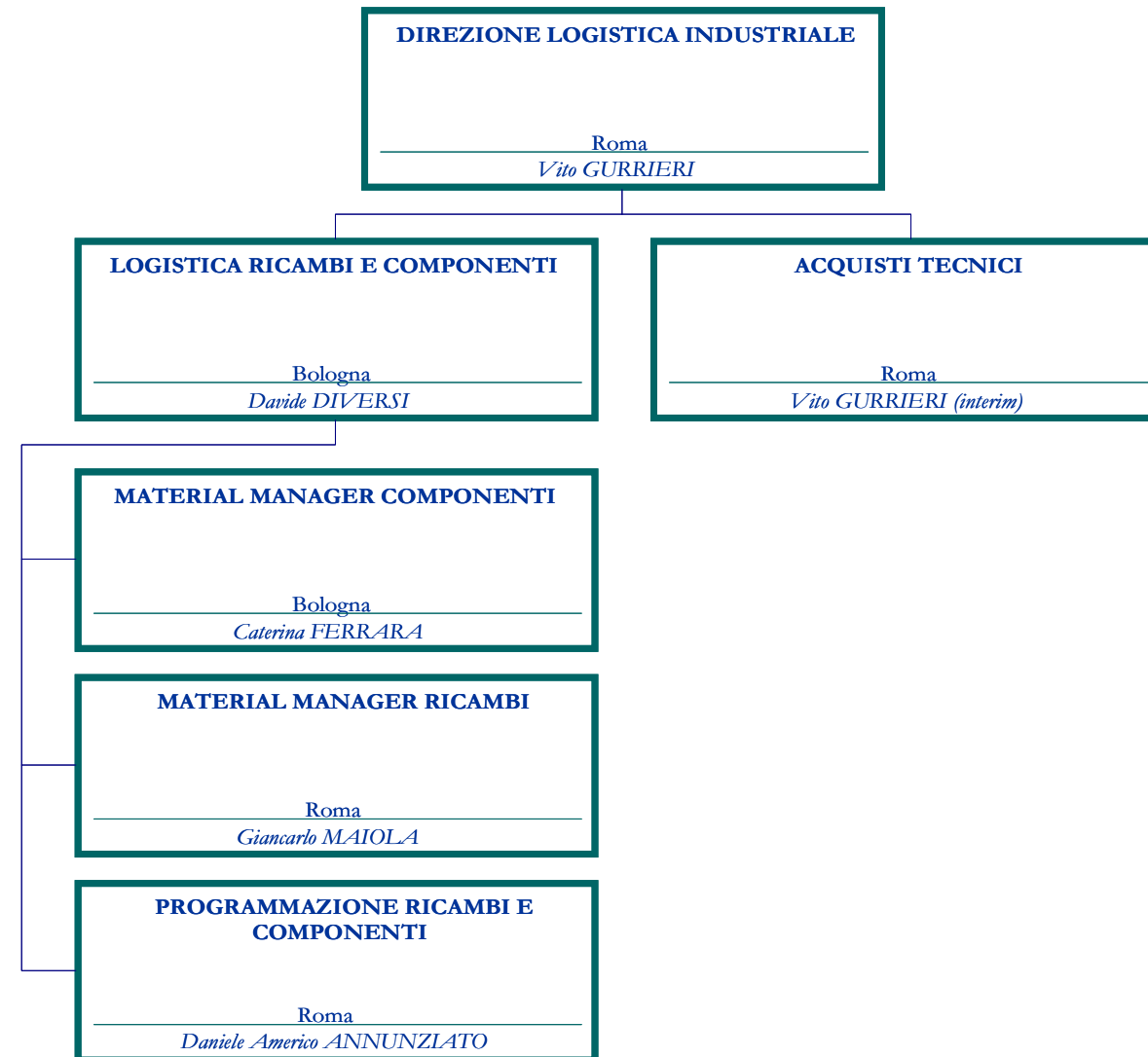




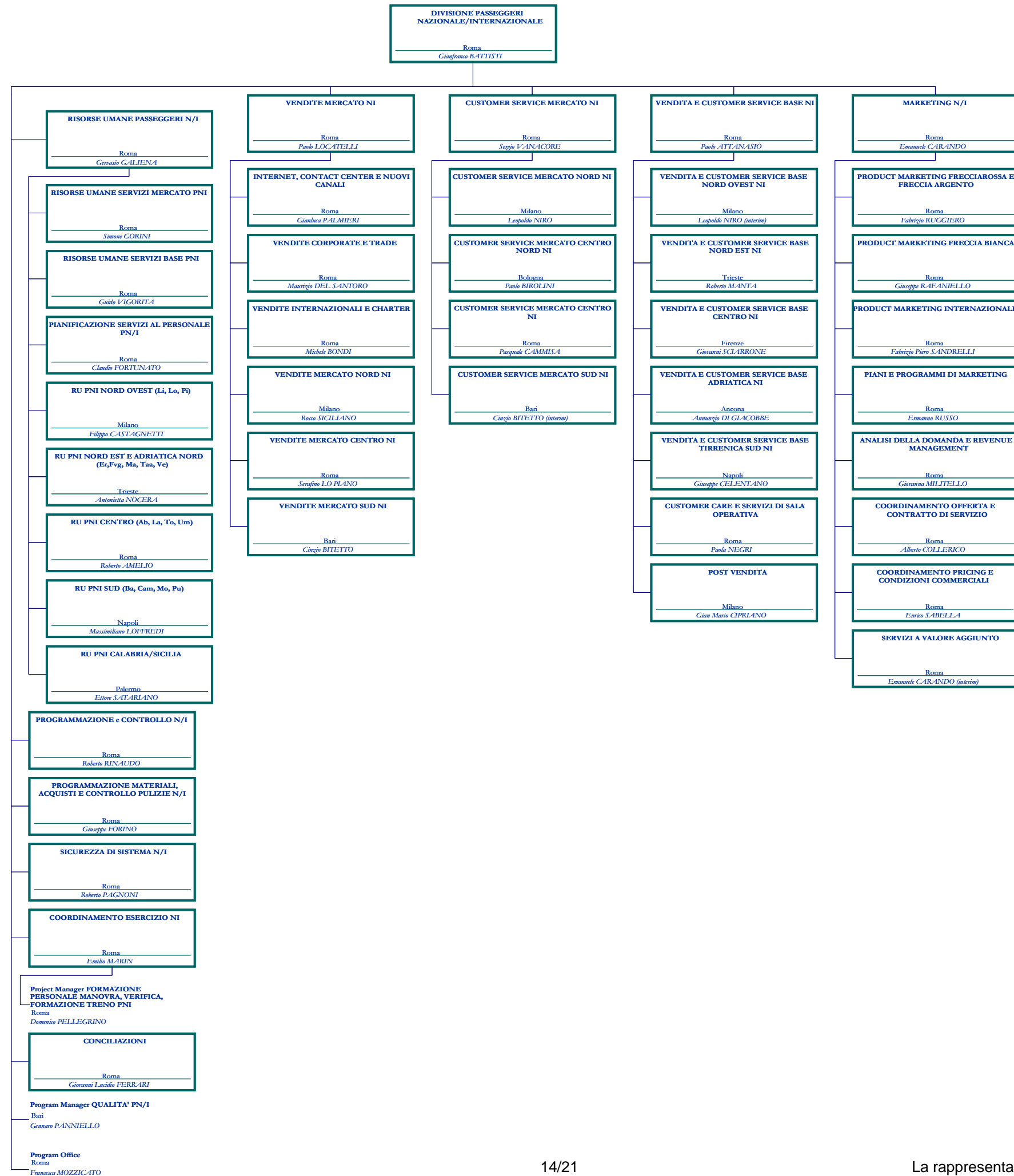




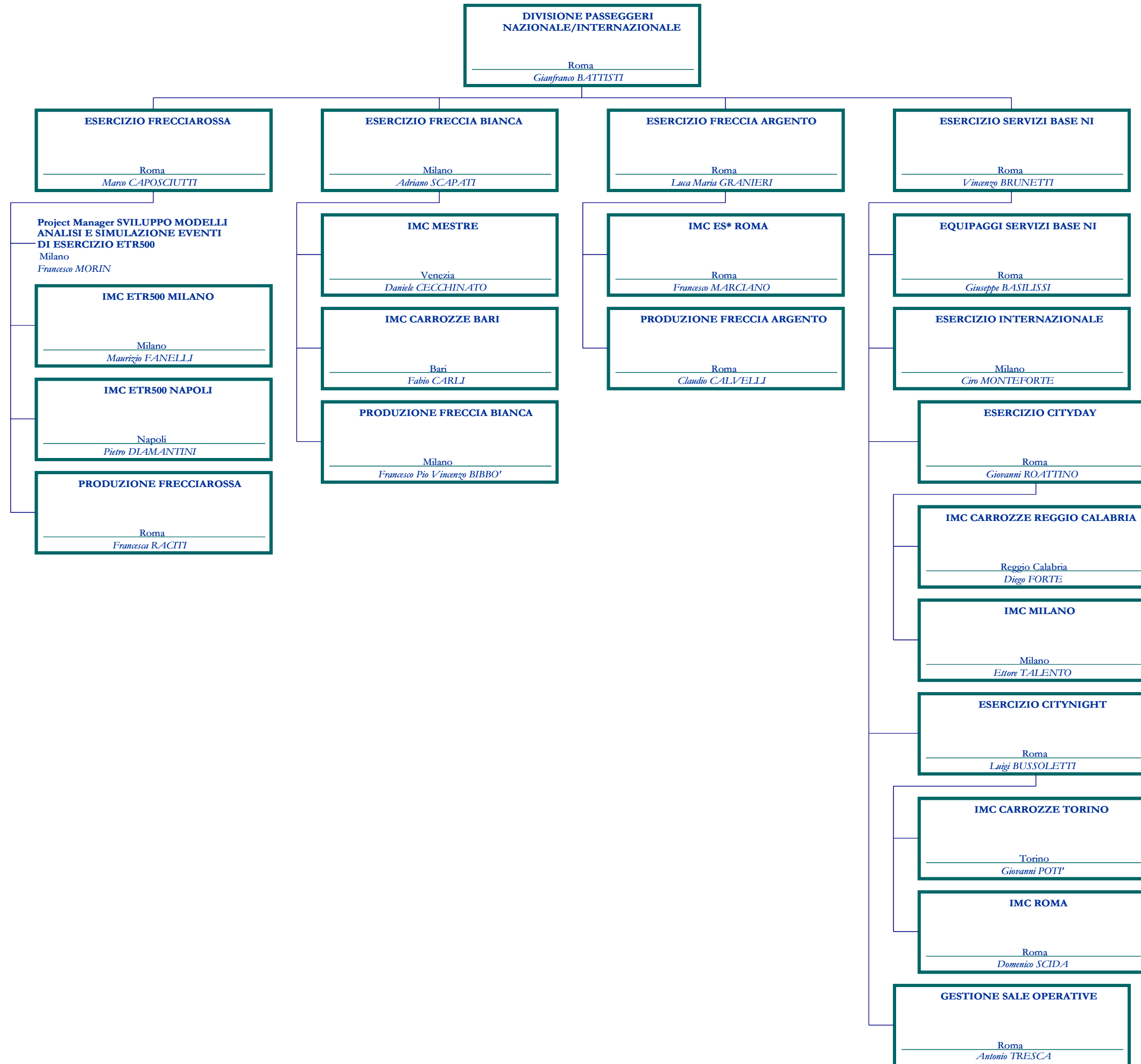




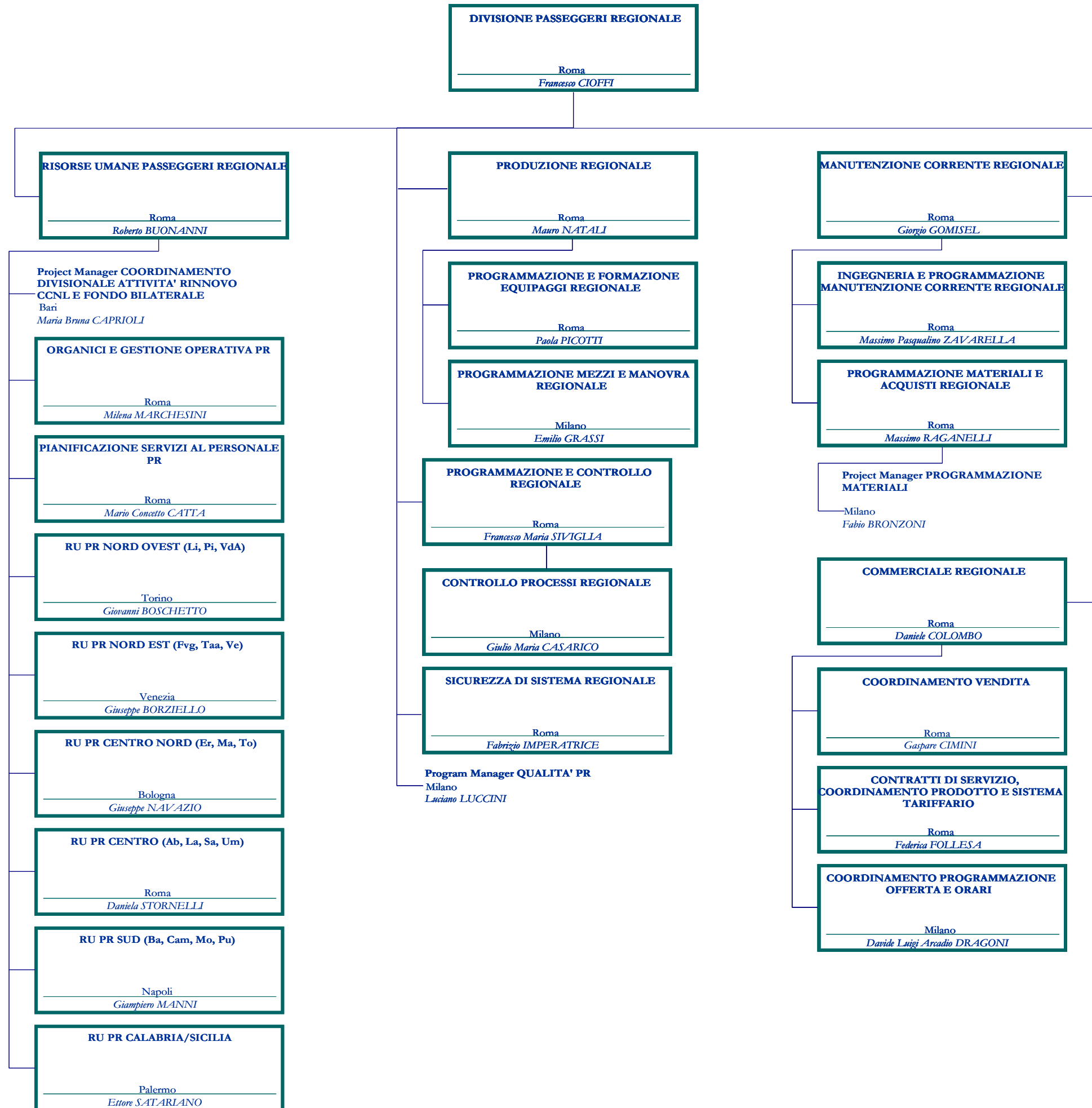
# DIVISIONE PASSEGGERI NAZIONALE/INTERNAZIONALE STAFF E LINE COMMERCIALI



**DIVISIONE PASSEGGERI NAZIONALE/INTERNAZIONALE LINE OPERATIVE**

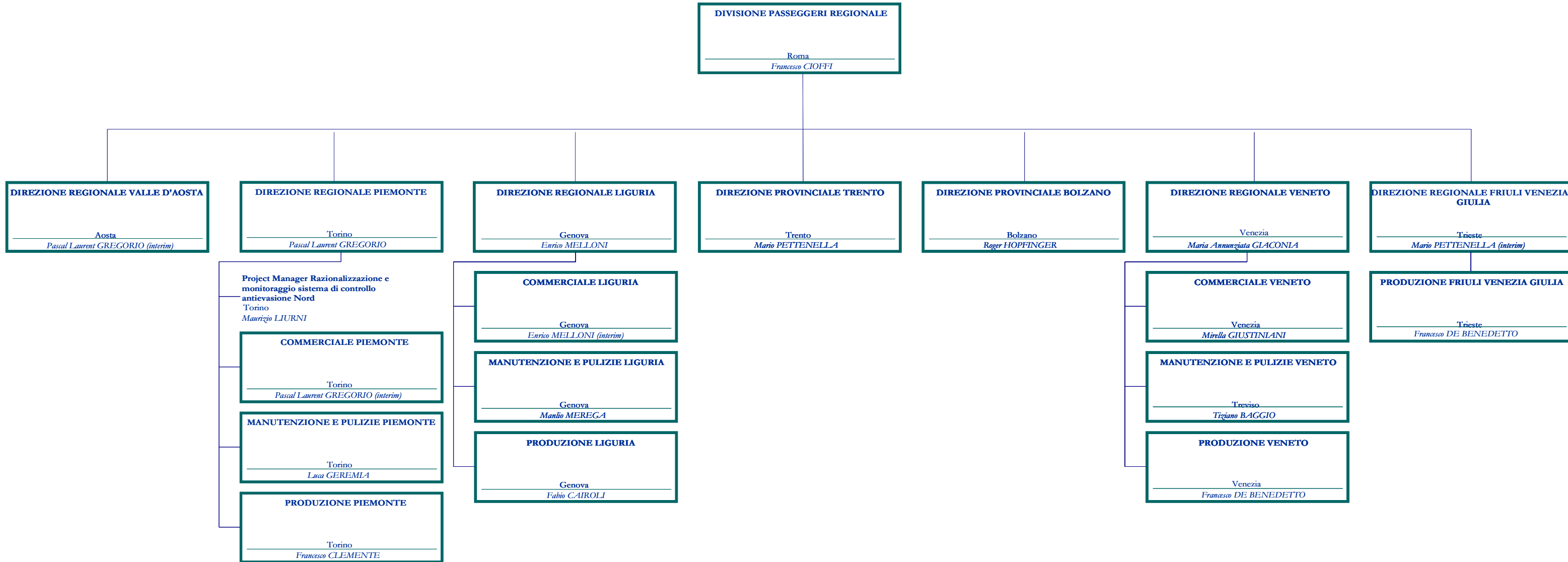


**DIVISIONE PASSEGGERI REGIONALE STAFF**

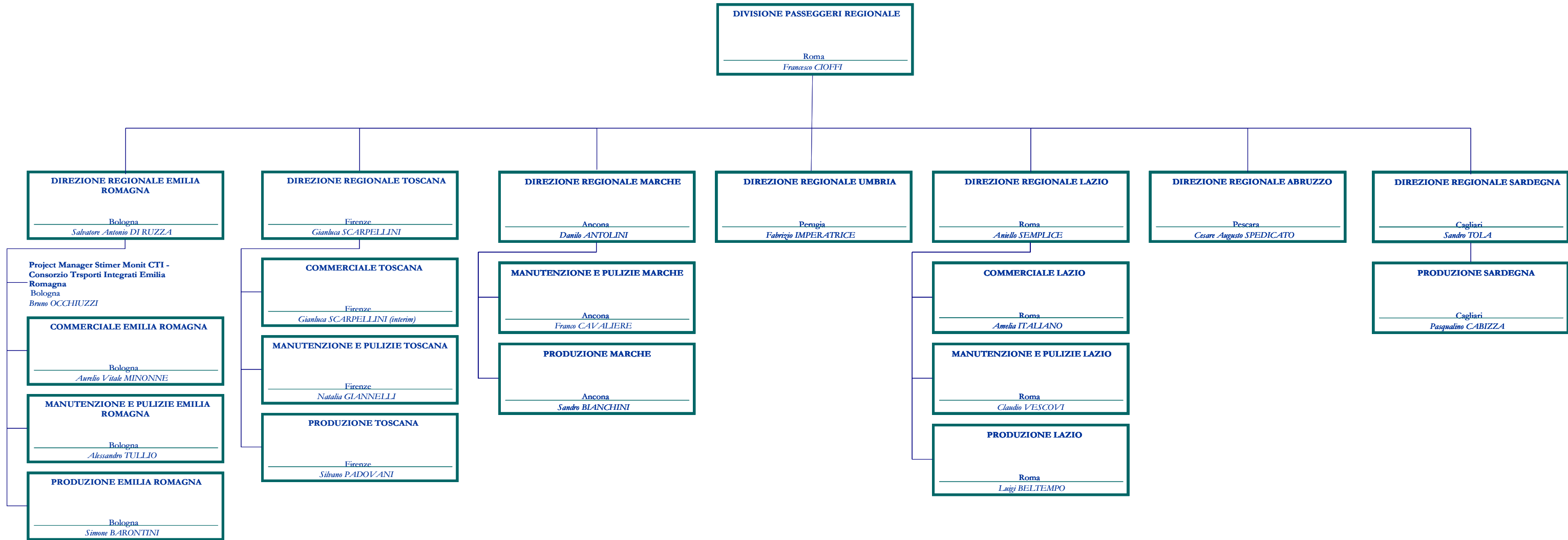




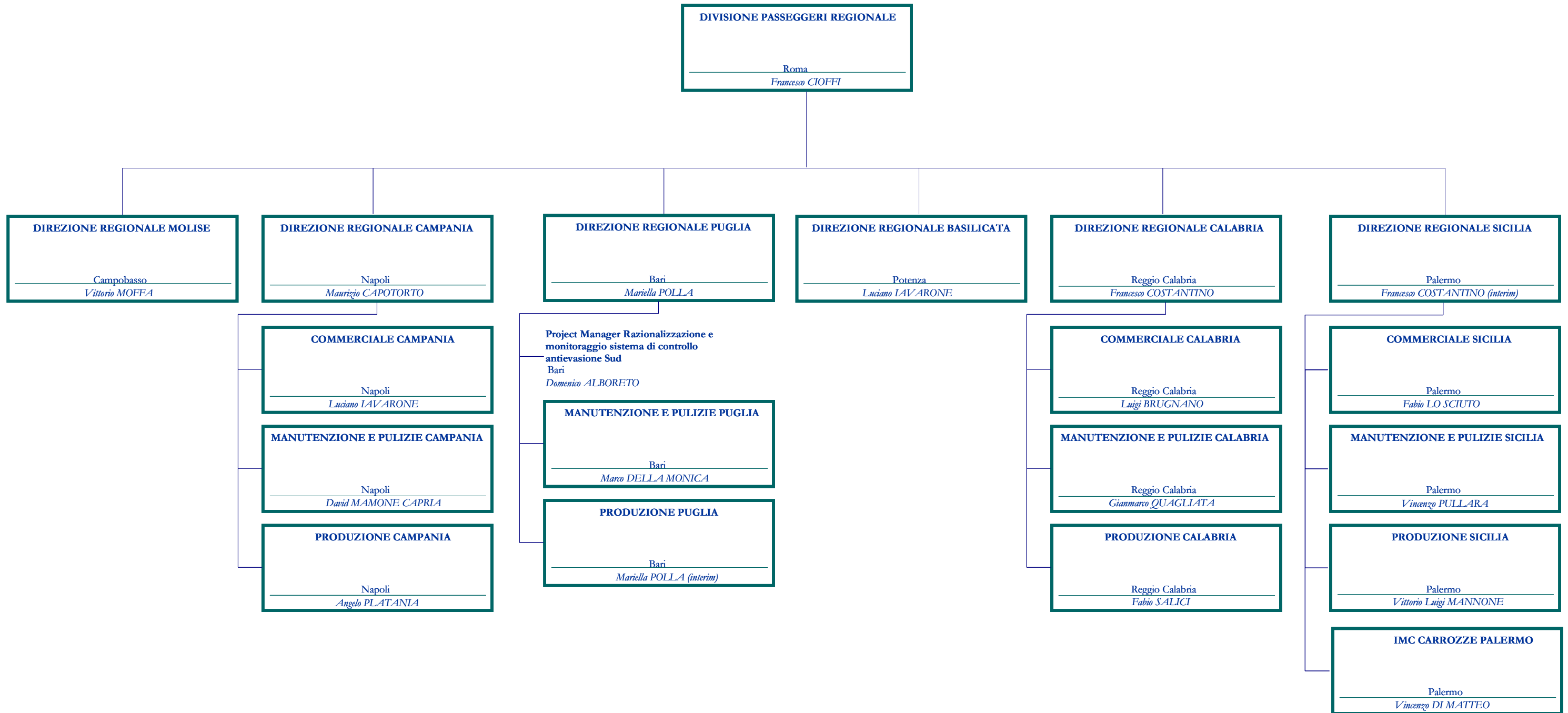
# DIVISIONE PASSEGGERI REGIONALE LINE NORD



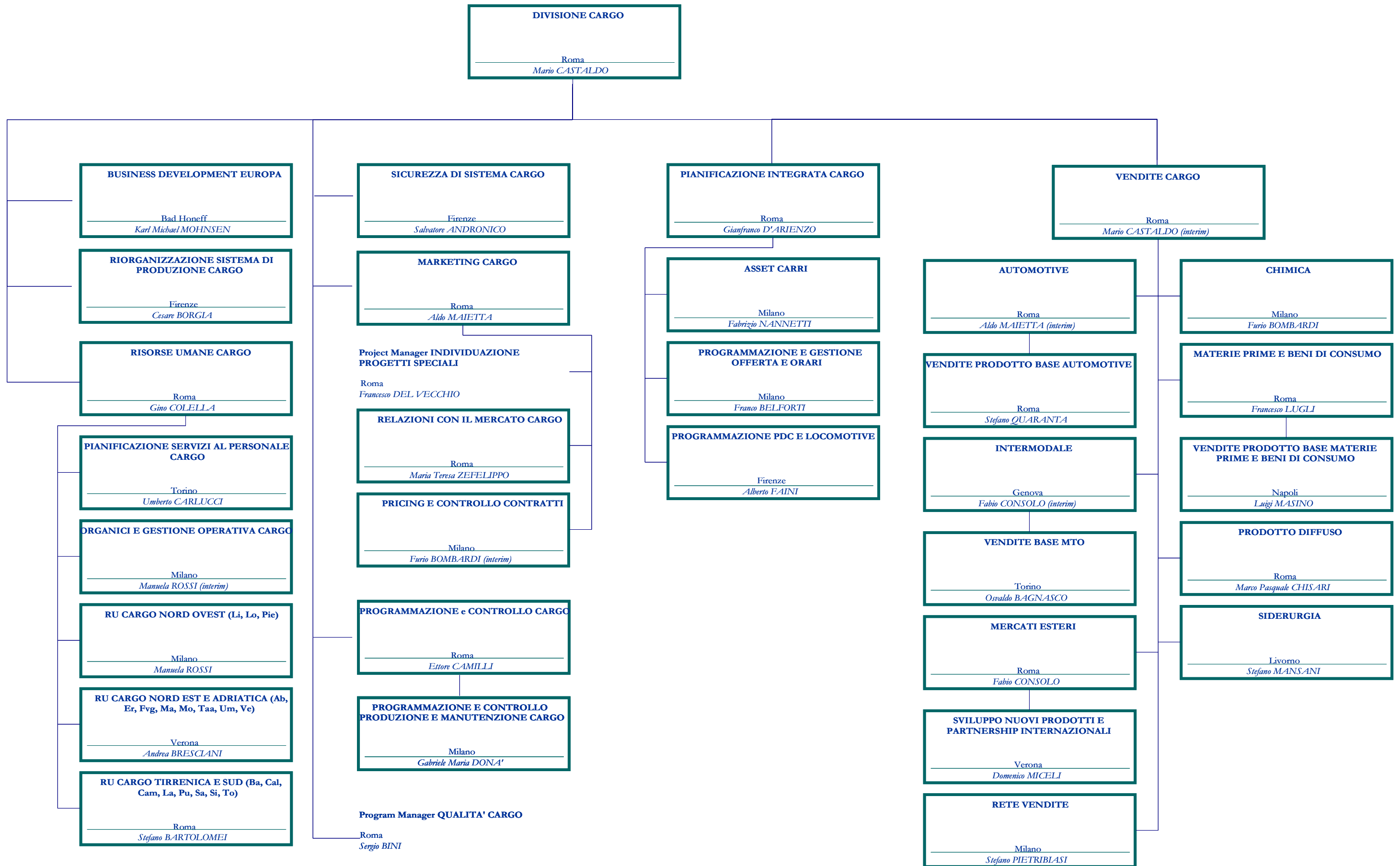
# DIVISIONE PASSEGGERI REGIONALE LINE CENTRO



**DIVISIONE PASSEGGERI REGIONALE LINE SUD**



**DIVISIONE CARGO STAFF E LINE COMMERCIALI**



**DIVISIONE CARGO LINE OPERATIVE**

